



**Economic and Social
Council**

Distr.
GENERAL

TRADE/WP.7/GE.6/2004/6
9 January 2004

ENGLISH
Original: FRENCH

ECONOMIC COMMISSION FOR EUROPE

COMMITTEE FOR TRADE, INDUSTRY AND
ENTERPRISE DEVELOPMENT

Working Party on Agriculture Quality Standards

Specialized Section on Standardization of
Seed Potatoes

Thirty-fourth session, Geneva, 22 to 24 March 2004
Item 4 (d) of the provisional agenda

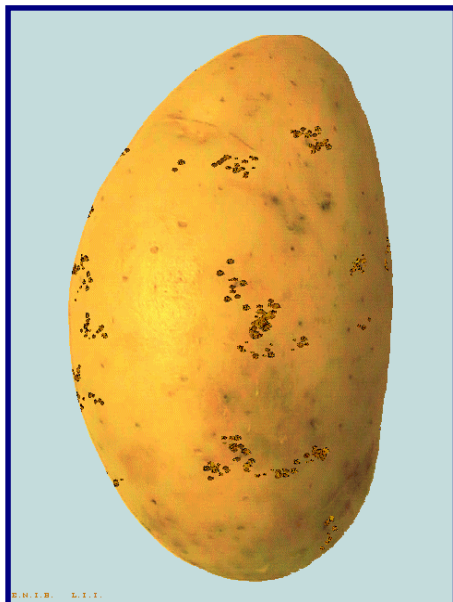
FURTHER DEVELOPMENT OF ANNEX VIII: IMAGES FOR COMMON SCAB

Submitted by the delegation of France

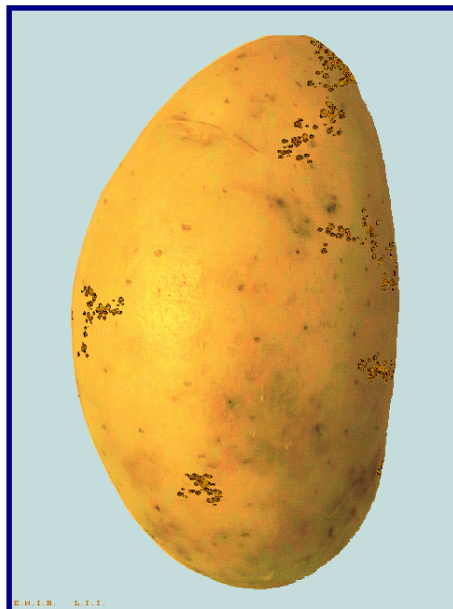
Note by the secretariat: The images for common scab contained in this document have been submitted by the delegation of France for inclusion in the standard.

Common scab: 1% surface area coverage

Homogeneous

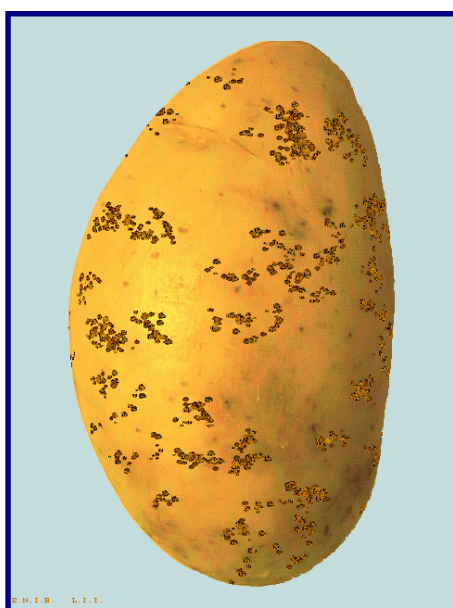


Concentrated

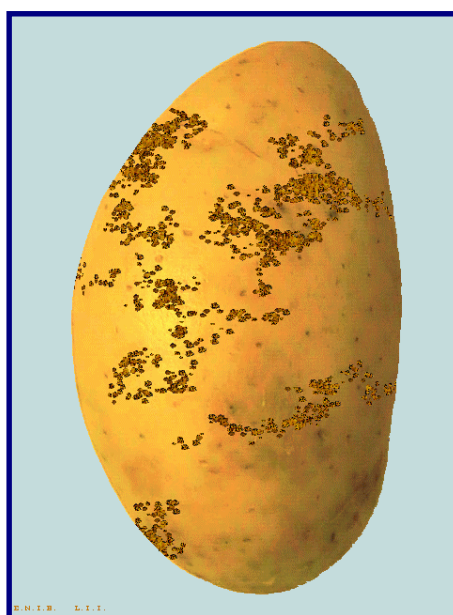


Common scab: 10% surface area coverage

Homogeneous

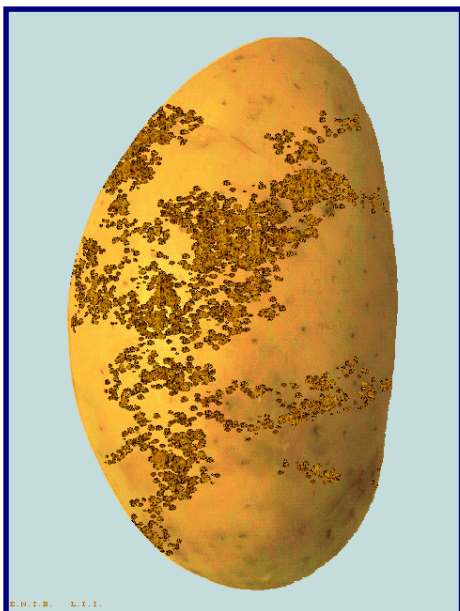


Concentrated

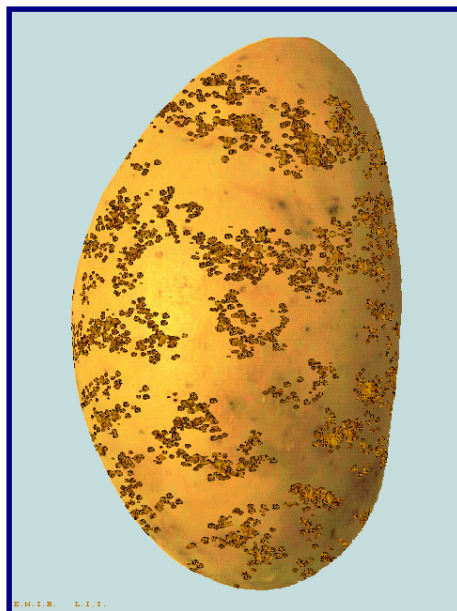


Common scab: 25% surface area coverage

Homogeneous

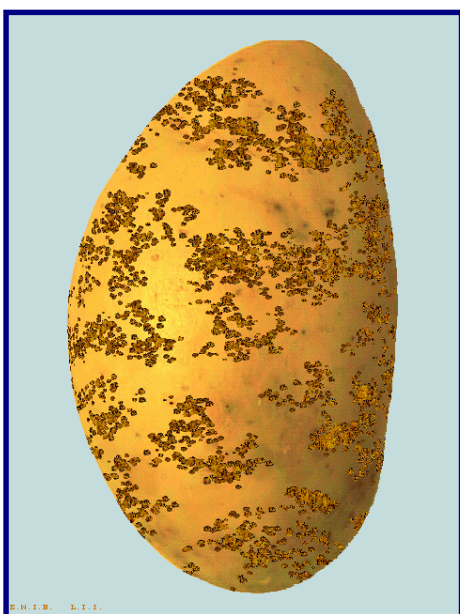


Concentrated



Common scab: 33.5% surface area coverage

Homogeneous



Concentrated

